



YOUTH
SPORT
TRUST



Believing in
every child's
future

Holiday Activities & Food Package

Context

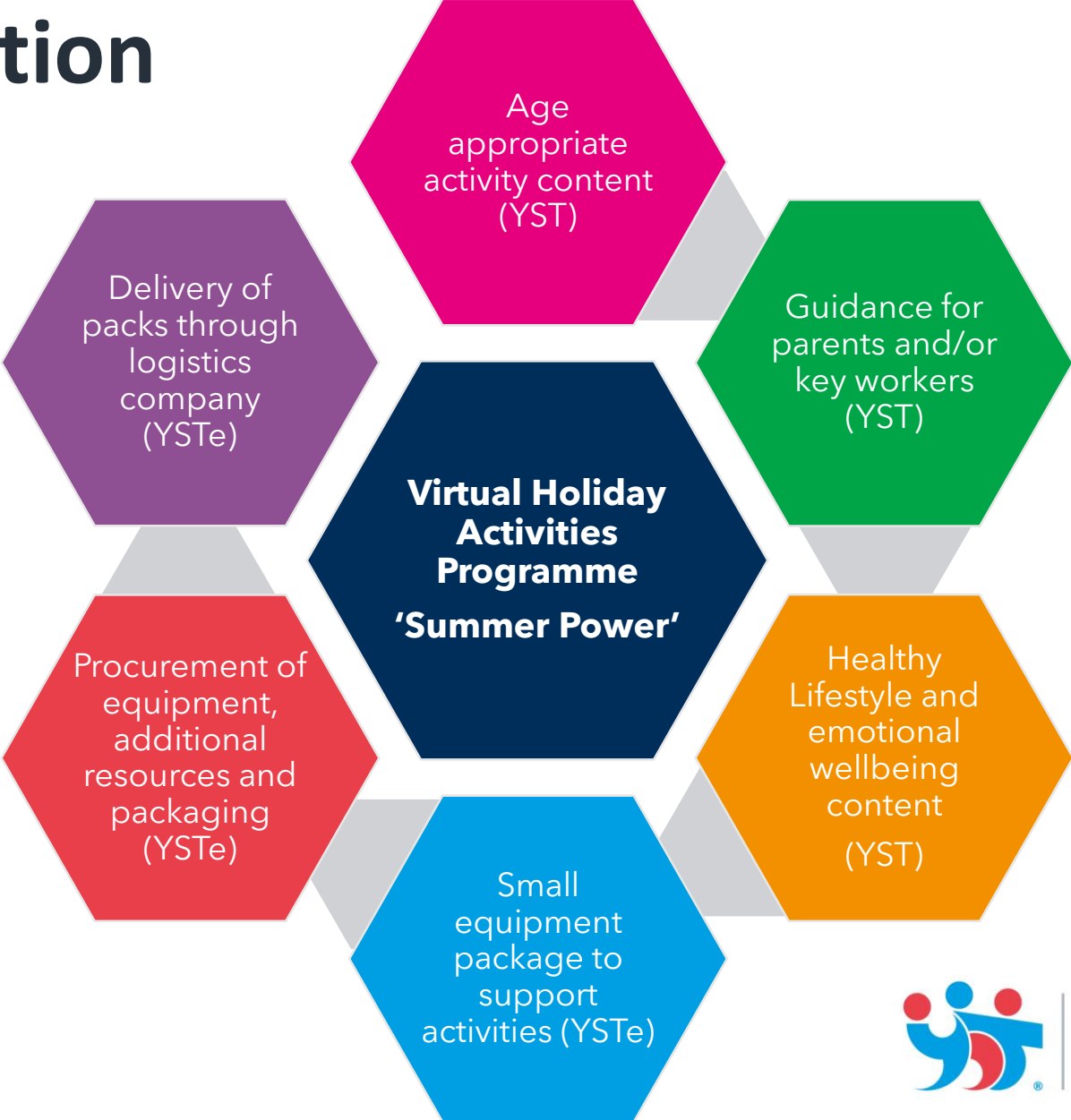


DfE priority areas need to work with vulnerable children and young people across the Summer holidays without being able to deliver a face-to-face. They need a reputable and virtual means of delivering engaging and meaningful content that supports their physical and emotional health that can be procured and delivered at scale.



Believing in every child's future

Package solution



**YOUTH
SPORT
TRUST**



Believing in every child's future

Activity content

Age
appropriate
activity content
(YST)

- Create online playlist for age and stage relevant activities
- Hard copy resources to overcome digital deprivation
- Linked to PE at home and the national curriculum
- Simple 'how to' guide for all children and young people
- Ensure content is accessible against SEN, environment, ability, COVID etc.
- Choose activities that are 'equipment light' but give opportunity for creativity
- Mixture of activities that are individual and family pairs/groups
- Develop timetable for activities throughout the day/week/holiday period



YOUTH
SPORT
TRUST



Believing in
every child's
future

Training

Guidance for
parents and/or
key workers
(YST)

- Light touch 'instructions for use' for parents/key workers
- Assistance with 'timetabling', inclusion and strategies for when to be active
- Consider elements of Autism, PE at Home for PMLD
- Orientation around the Active in Mind content/poster
- Delivered digitally through e-comms



Believing in
every child's
future

Lifestyle & emotional support

Healthy
Lifestyle and
emotional
wellbeing
content
(YST)

- Hard-copy Active in Mind posters for KS2-4
- Utilise healthy eating and oral health resources for Reception/KS1
- Utilise a series of videos orientating around the poster(s) through YouTube
- Ensure accessibility of the poster/video content



Believing in
every child's
future

Equipment packs

Small
equipment
package to
support
activities (YSTe)

- Drawstring bag with branding
- Healthy Movers at Home packs for Reception/KS1
- Differentiated equipment packs for KS2/KS3/KS4
- A variety of creative, innovative and inclusive equipment
- Small, scaleable and accessible equipment **that is available**
- Able to be used and sustained within the home/flat
- Consider a lack of outdoor space
- Consider a difference in parent/carer support
- *[Could include food pre-payment cards and additional resources]*



Believing in
every child's
future

Procurement

Procurement of
equipment,
additional
resources and
packaging
(YSTe)

- Procurement of equipment items
- Printing of posters and activity hard-copy resources
- Printing of guides and postcards
- Co-ordination of food vouchers
- Procurement of drawstring bags and packaging

- *Adhere to COVID restrictions and operating guidelines*
- *Drive carbon offset principles*
- *Work with new suppliers around product availability*
- *Co-ordination additional local content as required (e.g. arts and music)*



Believing in
every child's
future

Delivery

- Pick and pack all equipment and resources
- Co-ordinate packages for Healthy Movers Home packs
- Co-ordinate packages for KS2/KS3/KS4
- Co-ordinate delivery addresses
- Delivery of all packages into homes by 23rd July 2020
- Contactless delivery straight into children's homes

Delivery of
packs through
logistics
company
(YSTe)



Believing in
every child's
future

Budget

Virtual Holiday
Activities
Programme
'Summer Power'

- Budget based on:
 - Staff time for creating playlists and online libraries
 - Staff time for project management for delivery
 - Staff time for YSTe and procurement
 - Learning Academy time for authoring and creating video
 - Equipment and printing/branding
 - Packaging
 - Warehousing, picking and packing, delivery costs
 - Intellectual property
 - **Could include monitoring and evaluation and impact report**



YOUTH
SPORT
TRUST



Believing in
every child's
future

Further information

CHRIS WRIGHT, HEAD OF WELLBEING
chris.wright@youthsporttrust.org

RACHEL REDMOND, SENIOR DEVELOPMENT MANAGER
rachel.redmond@youthsporttrust.org



Believing in
every child's
future